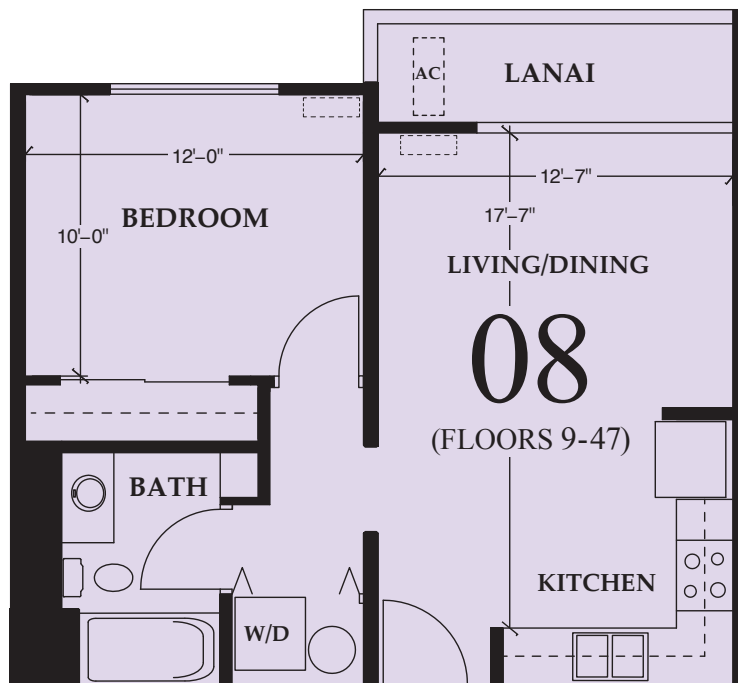




### 2013 Features:

- (1) Carpeting in living room and bedroom
- (2) Vinyl flooring in bathroom and kitchen
- (3) Grab bar in tub area
- (4) Window coverings
- (5) Granite kitchen countertops
- (6) 22.6 cubic foot refrigerator, disposal, 30" range and hood
- (7) Stacked washer/dryer and 50 gal. water heater
- (8) 12,000 BTU split air conditioner in living room
- (9) 9,000 BTU split air conditioner in bedroom
- (10) Poured concrete walls between apartments
- (11) Double pane glass windows & lanai door



---

## Apartment 08 FLOORS 9-47

### 1 Bedroom 1 Bath

Living Area	495 sq. ft.
Lanai	44 sq. ft.
<b>TOTAL AREA</b>	<b>539 sq. ft.</b>

Downtown Capital LLC reserves the right to discontinue, substitute, or change products or design without notice or obligation. All dimensions and square footages are approximate. See the public report for the description of the unit.

\*Rooms may be reversed in location

Note: Units 1708, 1808, 1908, 2008, 3108, 3208, 3308, 3408, 4408, 4508, 4608, 4708 have larger lanais.